



INSTRUCTION BULLETIN

No. 9004056

Machine: Numerous
Models (see below)

Published: 07-2015

Rev. 03

NOTE: DO NOT DISCARD the Parts List from the Instruction Bulletin. Place the Parts List in the appropriate place in the machine manual for future reference. Retaining the Parts List will make it easier to reorder individual parts and will save the cost of ordering an entire kit.

NOTE: Numbers in parenthesis () are reference numbers for parts listed in Bill of Materials.

Installation instructions for **kit number 9004054**

SYNOPSIS:

This kit contains the parts needed to replace the vacuum fan on 510E, 515, 8010, T15, 7200, 6100, 6200, 7300, 5680, 5700, and 8300 machines.

Please follow step-by-step instructions.

SPECIAL TOOLS / CONSIDERATIONS: NONE

(Estimated time to complete: 1.5 hours)

PREPARATION: All Machines

1. Park the machine on a clean level surface, turn off the machine, remove the key, and set the parking brake.

FOR SAFETY: Before leaving or servicing machine, stop on level surface, set parking brake, turn off machine, and remove key.

2. Disconnect the battery cables from the batteries.



WARNING: Always disconnect battery cables from machine before working on electrical components.

3. Remove all parts necessary to access the vacuum fan(s). Set all removed parts and mounting hardware aside.
4. Disconnect the wire harness and hose from the vacuum fan(s). Set the hose clamps aside.
5. Remove the vacuum fan(s) from the machine. Set the mounting hardware aside. Discard the vacuum fan(s).

NOTE: If installing kit onto 6100/6200/510E/515/8010 machines, discard the screws. New screws (6) are provided for mounting the new vacuum fan(s) (1) onto the machine.

NOTE: If installing kit onto T15/5680/5700 machines equipped with a single vacuum fan, use the 0.25" seal (7). Use the 3/8" seal (2) if installing kit onto the 510E, 515, 8010, 7200, 6100, 6200, 7300, and 8300.

NOTE: If mounting brackets or steel tubes are 3.1" or less in height, install the 0.25" sleeves (5) as shown in the diagrams.

INSTALLATION: T15 and 7200

NOTE: Use instructions below to install both vacuum fans onto the machine if replacing fans on a machine equipped with dual vacuum fans.

1. Install the seal (2) onto the vacuum fan (1). (Fig. 1)

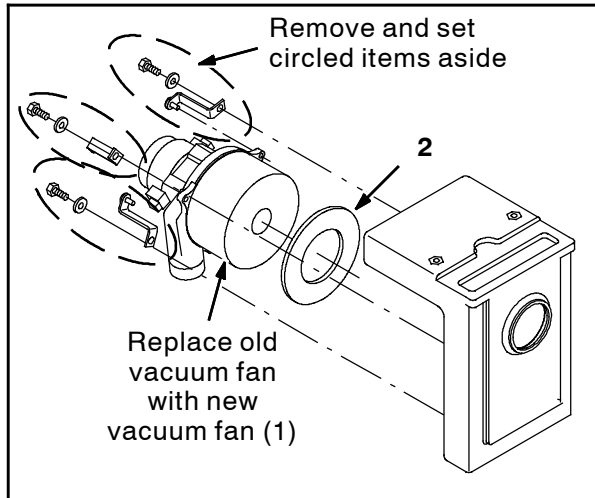


FIG. 1

2. Use saved hardware to install the new vacuum fan (1) onto the machine. (Fig. 1)

NOTE: Install the three sleeves (5) between vacuum fan mounting brackets and vacuum fans (1) if installing kits on a machine equipped with dual vacuum fans mounted on brackets 3 in. or less in height. (Fig. 2)

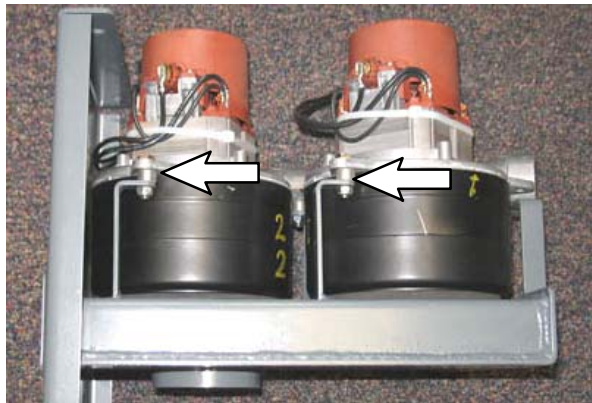


FIG. 2

3. Remove the existing circuit breaker from CB7 on the electrical panel. (Fig. 3)

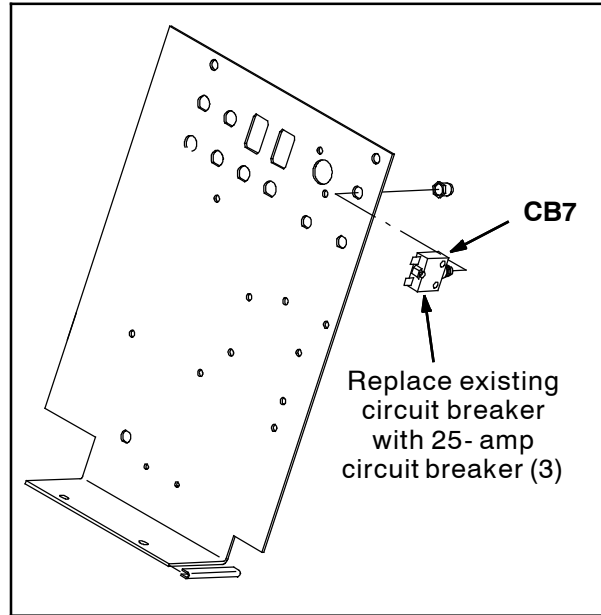


FIG. 3

4. Install the 25- Amp circuit breaker into electrical panel location CB7. (Fig. 3)

NOTE: It is recommended that a 50- Amp circuit breaker (part number 383728- not included) be used instead of 40 Amp circuit breaker (3) if installing two vacuum fans (1) onto a machine equipped with dual vacuum fans.

5. Connect the main wire harness and hose to the vacuum fan (1).
6. Reinstall all parts previously removed to access the vacuum fan.
7. Reattach the battery cables to the batteries.
8. Start and test the machine.

INSTALLATION: 6100

NOTE: Use instructions below to install both vacuum fans onto the machine if replacing fans on a machine equipped with dual vacuum fans.

1. Install the seal (2) onto the vacuum fan (1). (Fig. 4)

NOTE: Do not use hardware removed with old vacuum fan to install the new vacuum fan (1). Discard the old hardware.

2. Use three hex screws (6), three tubes (5), and the three existing tubes to install the new vacuum fan (1) onto the machine. Discard the three hex nuts (4). (Fig. 4)
3. Remove the existing circuit breaker from the electrical panel. (Fig. 4)

4. Install the 25 Amp circuit breaker into electrical panel. (Fig. 4)

NOTE: TENNANT recommends that a 50 Amp circuit breaker (part number 383728- not included) be used instead of the 40 Amp circuit breaker (3) if installing two vacuum fans (1) onto a machine equipped with dual vacuum fans.

5. Connect the main wire harness and hose to the vacuum fan (1).
6. Reinstall all parts previously removed to access the vacuum fan.
7. Reattach the battery cables to the batteries.
8. Start and test the machine.

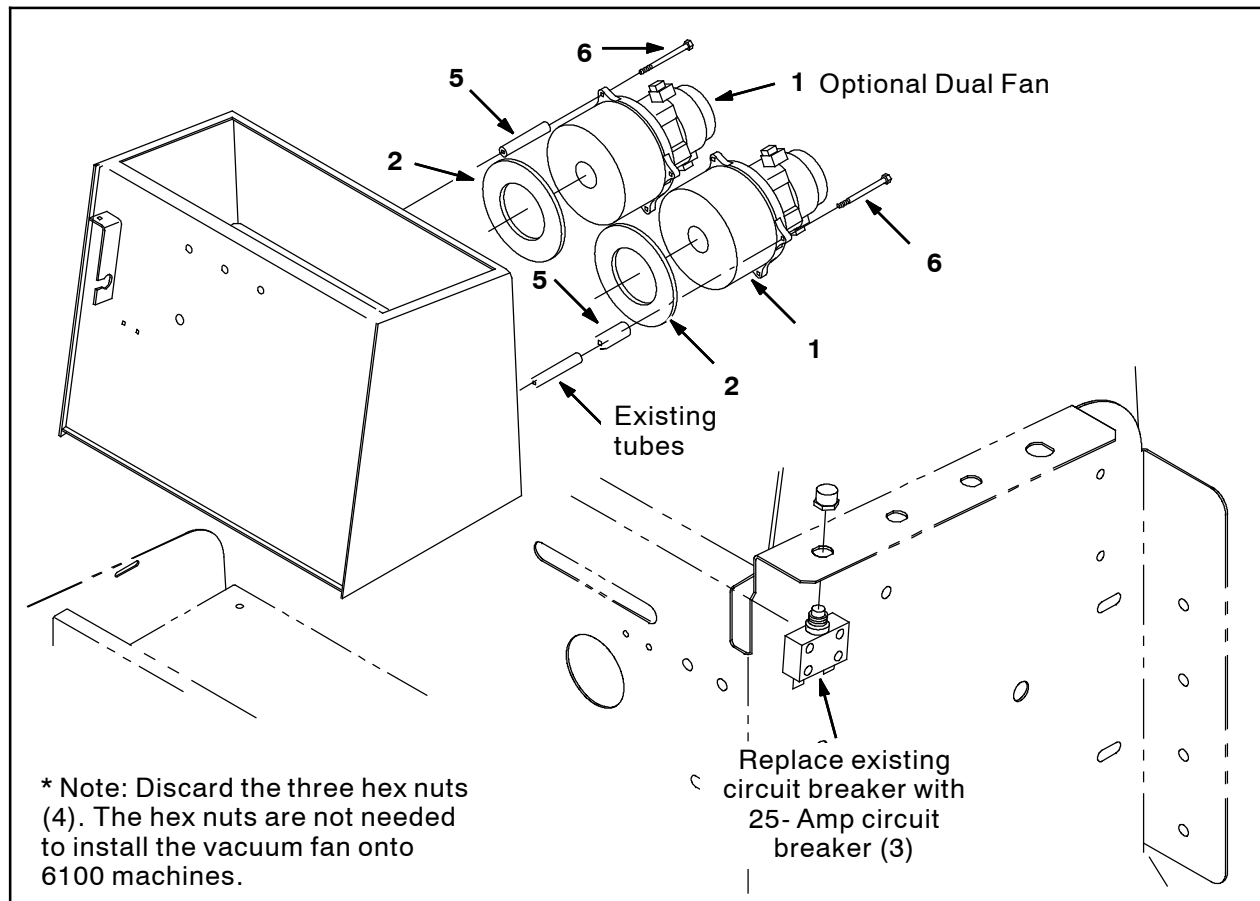


FIG. 4

**INSTALLATION: 510E, 515, 6200, 8010
(9004054)**

NOTE: Use instructions below to install the vacuum fan(s) onto all the above listed machines. Refer to Fig. 5 for parts installed onto 6200 machines. Refer to Fig. 6 for parts installed onto 510E, 515, and 8010 machines.

1. Install the seal (2) onto the vacuum fan (1).

NOTE: Do not use screws removed with old vacuum fan to install the new vacuum fan (1). Discard the old screws.

2. Use the three hex screws (6), three tubes (5), the three existing tubes, and three hex nuts (4) to install the new vacuum fan (1) onto the machine.

3. Remove the existing circuit breaker from the electrical panel.
4. Install the 25- Amp circuit breaker (3) into electrical panel.
5. Connect the main wire harness and hose to the vacuum fan (1).
6. Reinstall all parts previously removed to access the vacuum fan.
7. Reattach the battery cables to the batteries.
8. Start and test the machine.

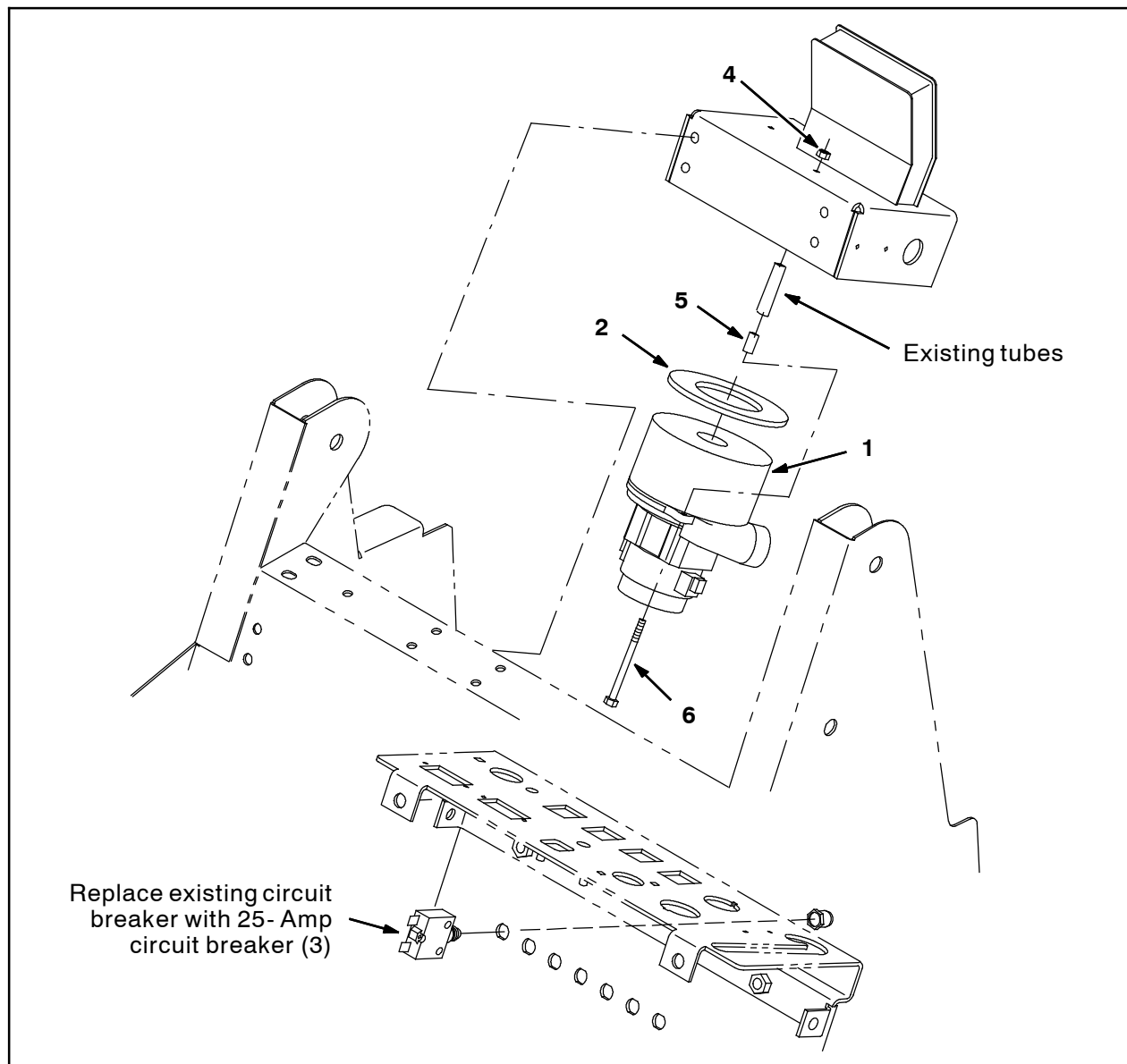


FIG. 5

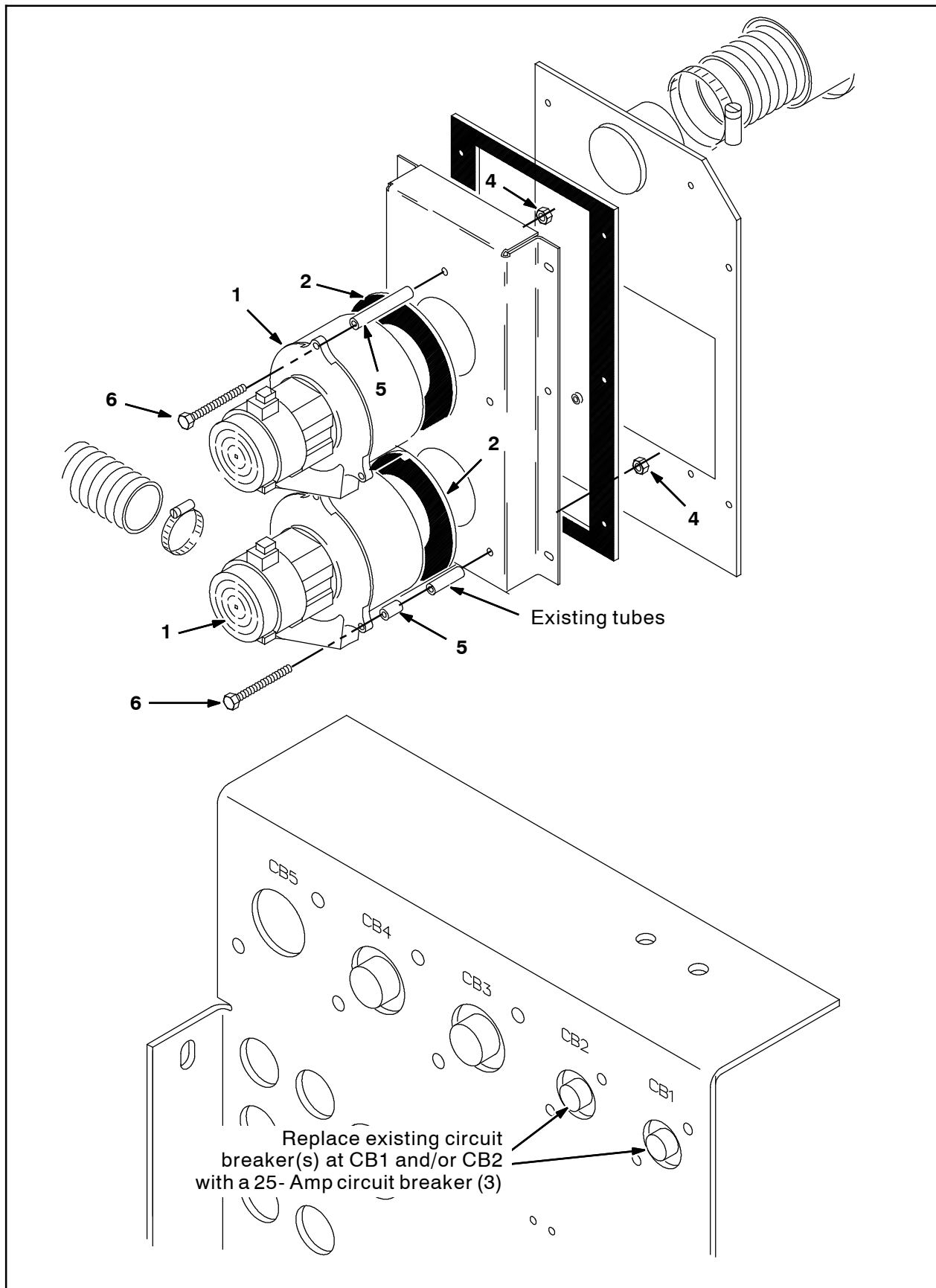


FIG. 6

INSTALLATION: 7300 and 8300

NOTE: Use instructions below to install both vacuum fans onto the machine.

1. Install the seal (2) onto the vacuum fans (1). (Fig. 7)
2. Use saved hardware to install the new vacuum fans (1) onto the machine. (Fig. 7)

NOTE: Use the three sleeves (5) only if bracket is 3.1 in. or less in height.

3. Connect the main wire harness and hoses to the vacuum fans (1).
4. Reinstall all parts previously removed to access the vacuum fans. (Fig. 7)
5. Reattach the battery cables to the batteries.
6. Start and test the machine.

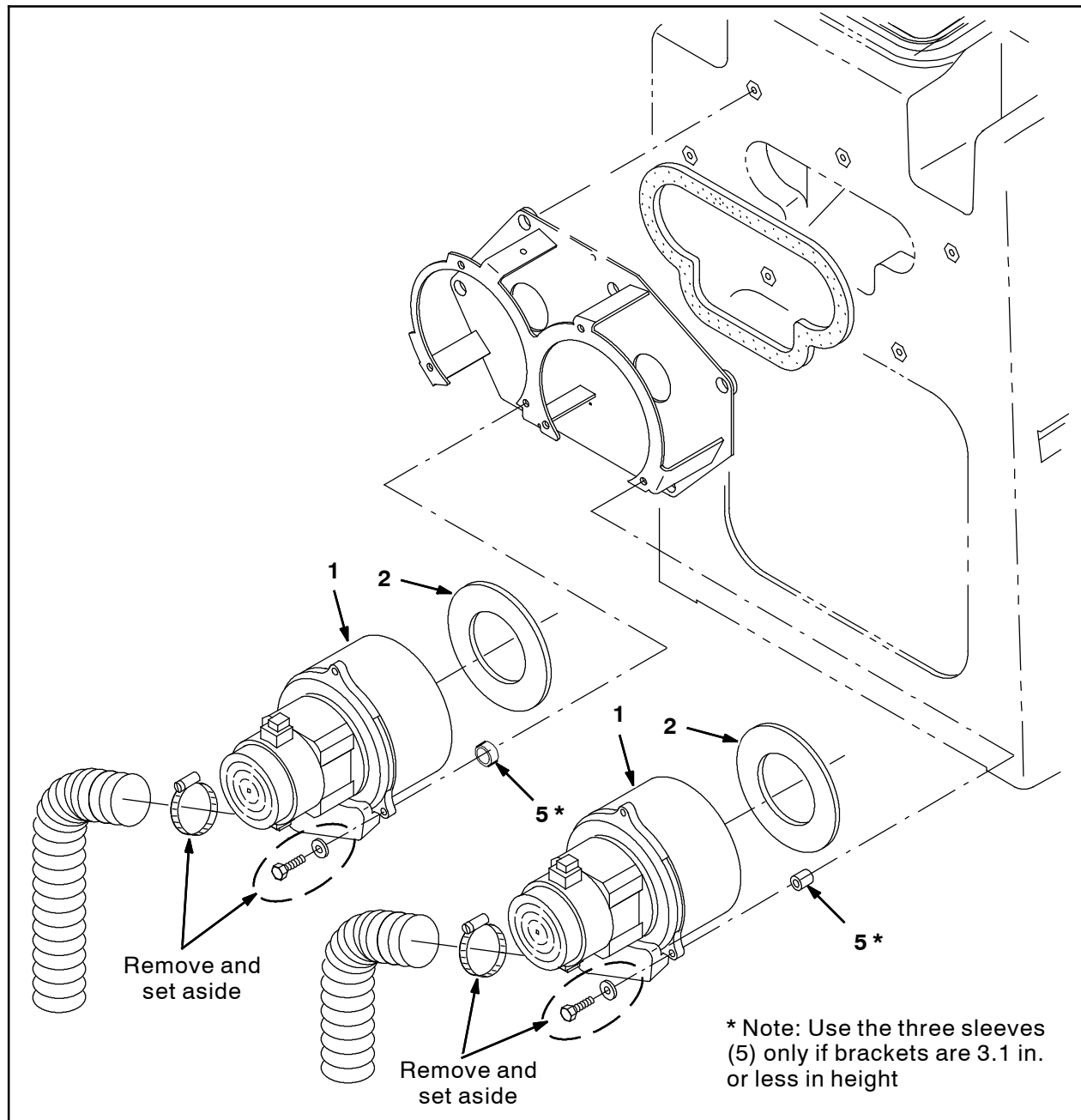


FIG. 7

INSTALLATION: 5680 and 5700

NOTE: Use instructions below to install both vacuum fans if installing kit on 5700 equipped with the dual vacuum fan option. Refer to Fig.8 for parts installed onto 5680 and 5700 machines.

1. Install the seal (7) onto the vacuum fans (1).
2. Use saved hardware to install the new vacuum fans (1) onto the machine.
3. Remove the existing circuit breaker from the electrical panel.
4. Install the 25- Amp circuit breaker (3) into electrical panel.
5. Connect the main wire harness and hose to the vacuum fan (1).
6. Reinstall all parts previously removed to access the vacuum fan.
7. Reattach the battery cables to the batteries.
8. Start and test the machine.

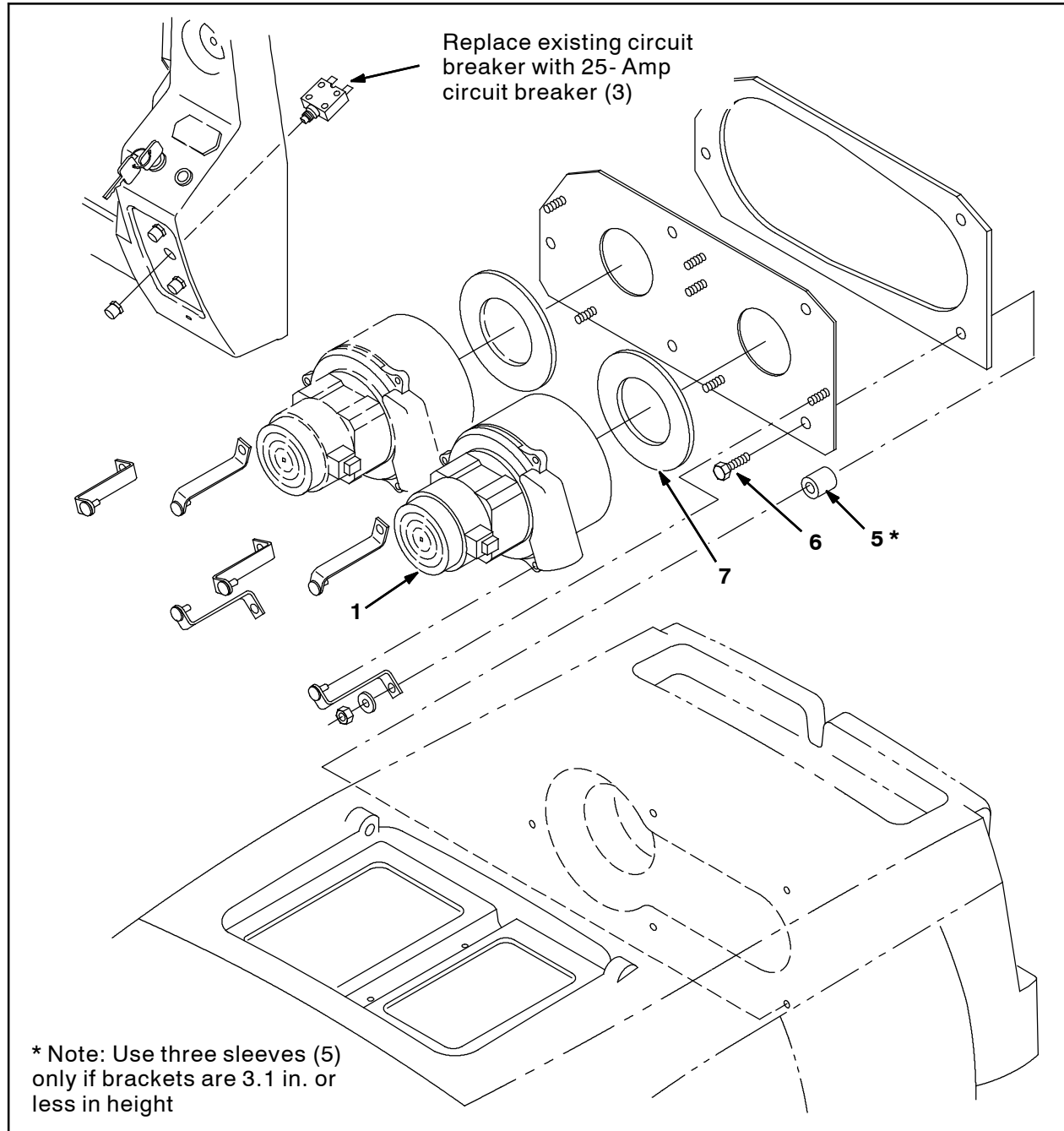


FIG. 8

Bill of Materials for Motor Kit, Vacuum, Replmt - 9004054

	Ref.	Tennant Part No.	Description	Qty.
▽		9004054	Motor Kit, Vacuum, Replmt	1
▲	1	1039617	Fan, Vacuum, 5.7D, 036VDC, 3 Stage	1
▲	2	10912	Seal, Rbr, Clsd, 0.375, 5.0D 2.5H	1
▲	3	383724	Circuit Breaker, 25.0A, Resettable	1
▲	4	08712	Nut, Hex, Lock, M6 X 1.00, NL, SS	3
▲	5	360801	Sleeve, 0.31B 0.50D 0.3L, SS	3
▲	6	1043003	Screw, Hex, M6 X 1.00 X 110MM, SS	3
▲	7	223264	Seal, Rbr, Clsd, 0.25, 5.0D 03.3H	1

TENNANT COMPANY
P. O. Box 1452
Minneapolis, MN 55440-1452